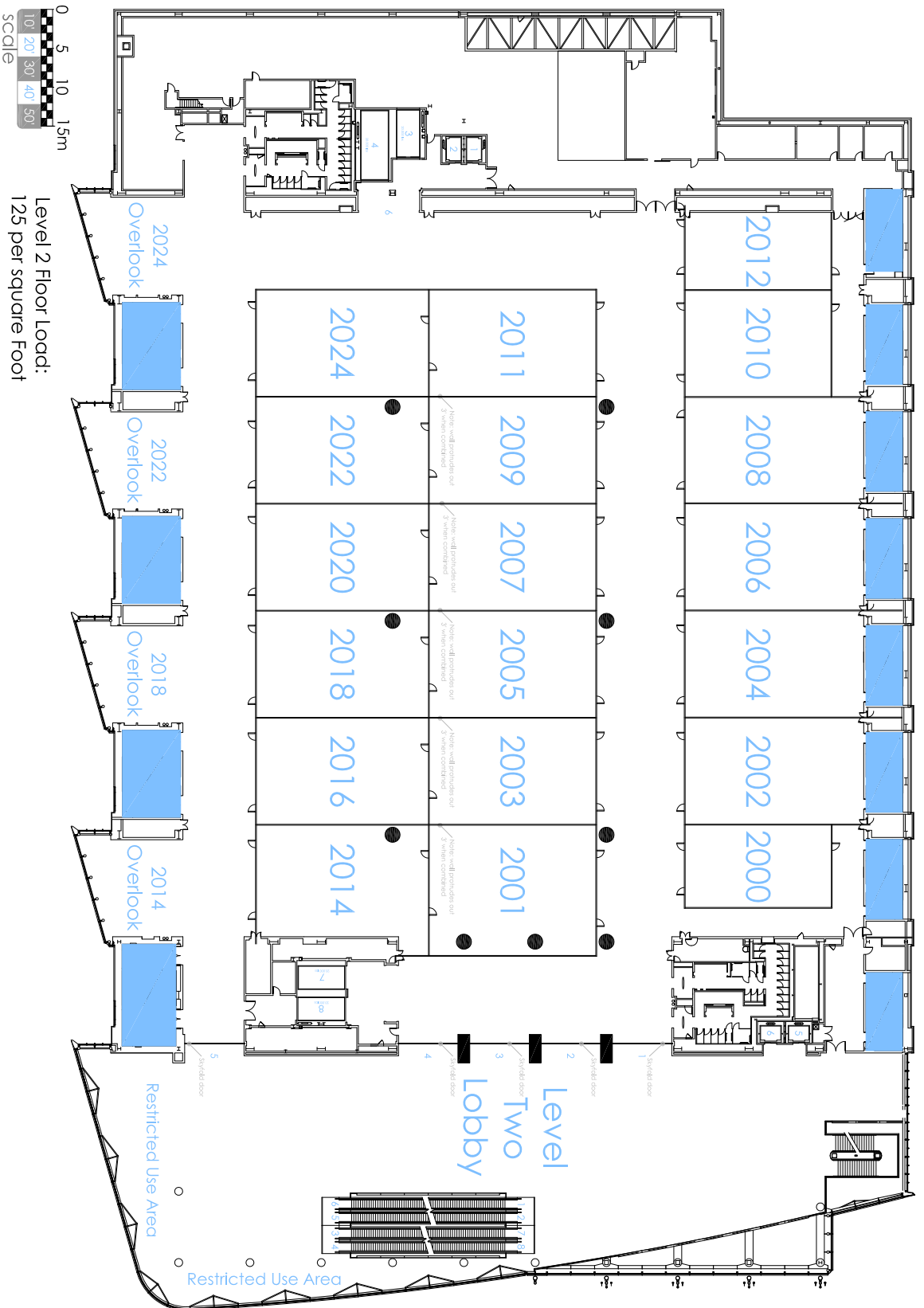




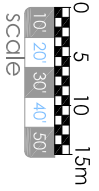
West  
Level Two



This drawing is intended as a guide only. The Moscone Center/SMG cannot be held responsible for on-site verifications or adjustments.



# West Level Two | Rigging



Level 2 Floor Load:  
125 per square Foot

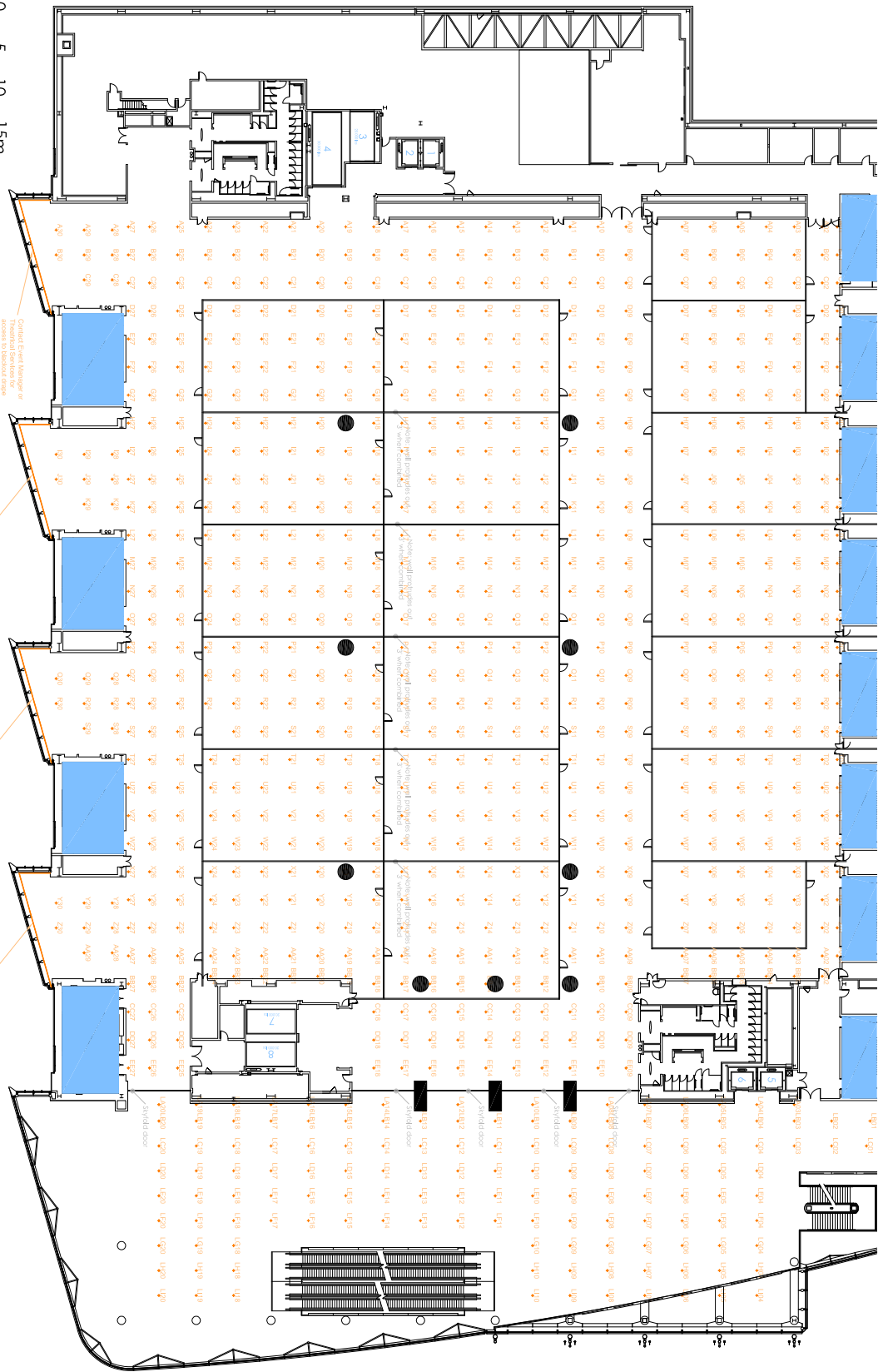
**NOTES**

- RIGGING EYEBOLT POINTS ARE ENTERED AT 500N, ES, VERTICALLY DOWNWARD
- HEIGHT FROM FLOOR TO CEILING = 7'
- HEIGHT FROM CEILING TO TOP OF AN EYEBOLE = 4.283'

**KEY**

- RIGGING EYEBOLE POINT
- RIGGING POINT UNDER BEAM

**rig points**



**Disclaimer**

This drawing is intended as a guide only. The Moscone Center/SMG cannot be held responsible for on-site variations or adjustments.

10 29 1



West  
Level Two | Utilities



**Disclaimer**  
This drawing is intended as a guide only. The Moscone Center/SMG cannot be held responsible for on-site variations or adjustments.  
09.13.20



West  
Level Two | Keep Clear

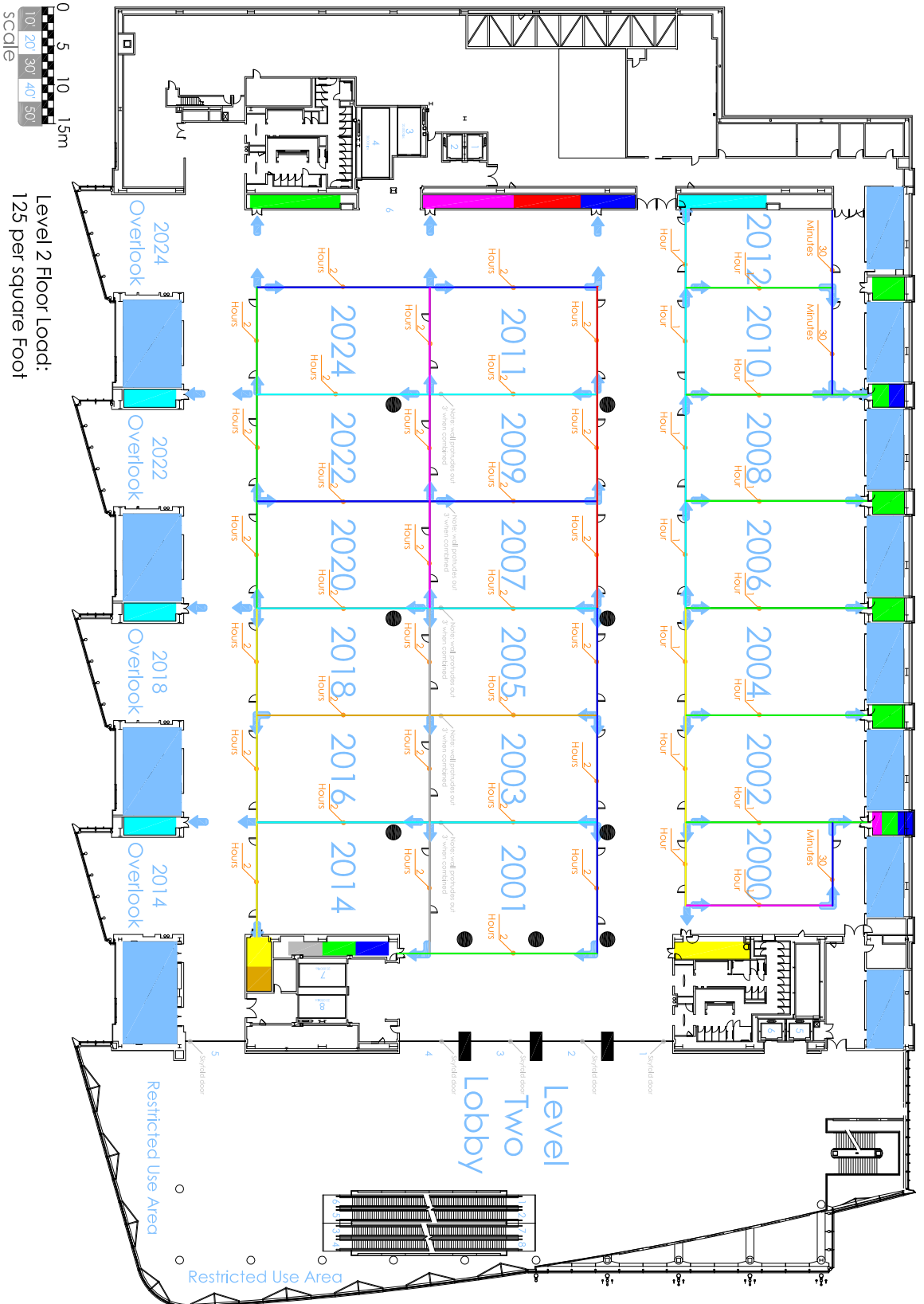


Level 2 Floor Load:  
125 per square foot

**Disclaimer**  
This drawing is intended as a guide only. The Moscone Center/SMG cannot be held responsible for on-site variations or adjustments.  
09.13.20



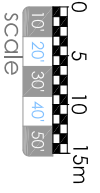
West  
Level Two | Airwalls



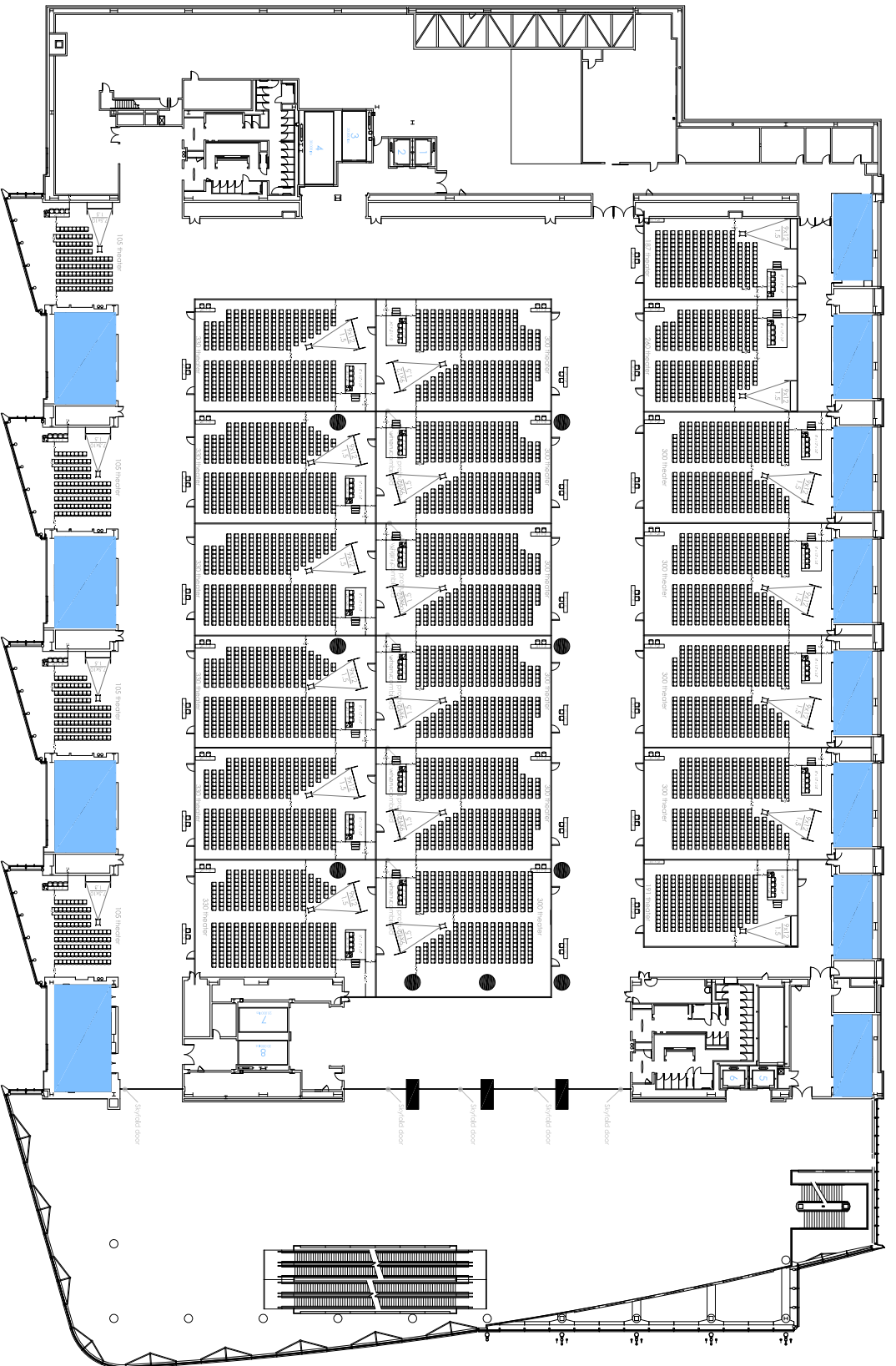
**Disclaimer**  
 This drawing is intended as a guide only. The Moscone Center/SMG cannot be held responsible for on-site variations or adjustments.  
 09.13.20



West  
Level Two | Theater



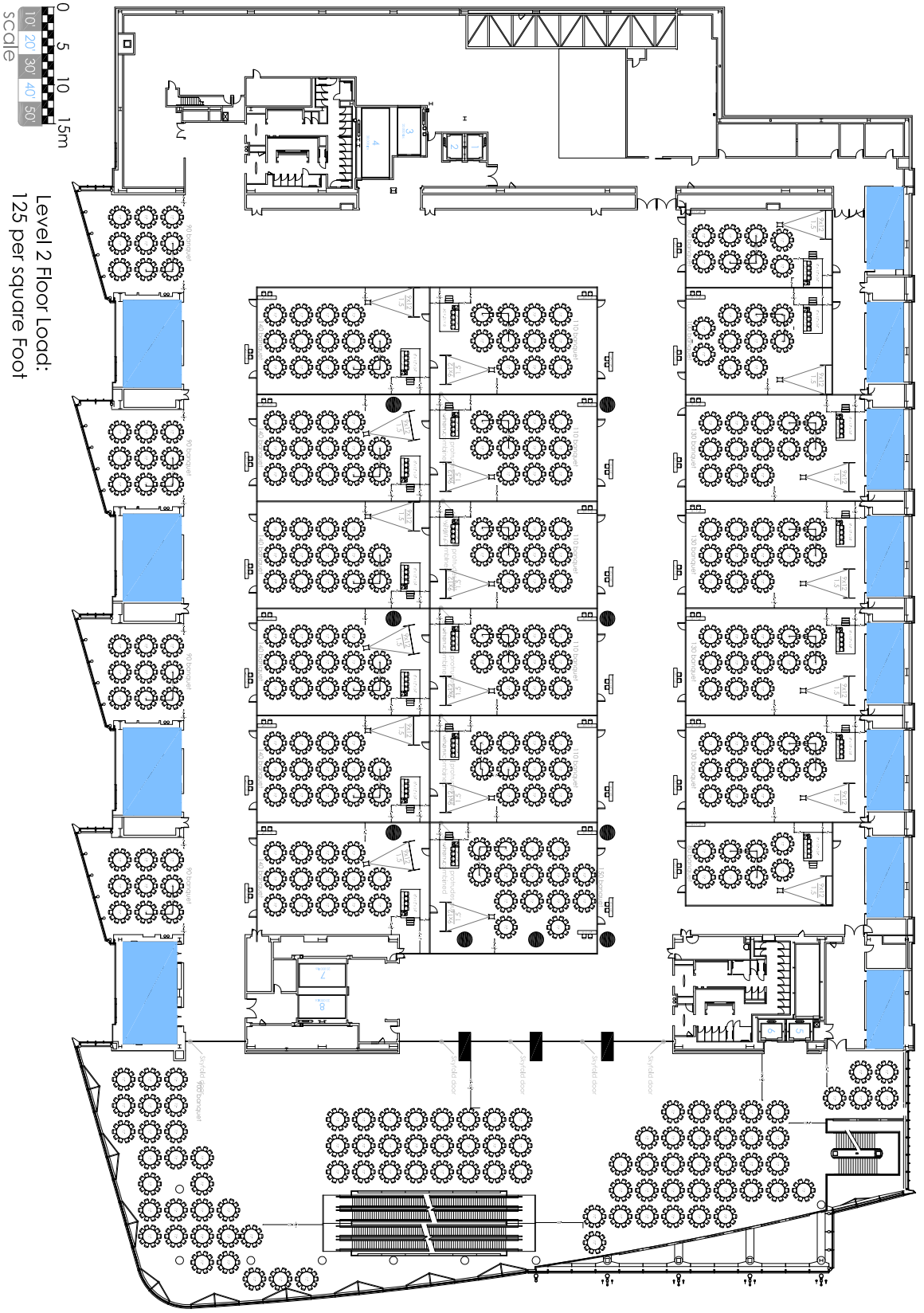
Level 2 Floor Load:  
125 per square foot



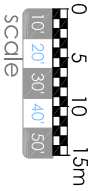
**Disclaimer**  
This drawing is intended as a guide only.  
The Moscone Center/SMG cannot be held  
responsible for on-site variations or  
adjustment.  
09.13.20



West  
Level Two | Banquet



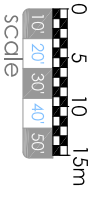
Level 2 Floor Load:  
125 per square foot



**Disclaimer**  
This drawing is intended as a guide only.  
The Moscone Center/SMG cannot be held  
responsible for on-site variations or  
adjustment.  
09.13.20



West  
Level Two | Classroom



Level 2 Floor Load:  
125 per square foot

