



SOUTH HALL

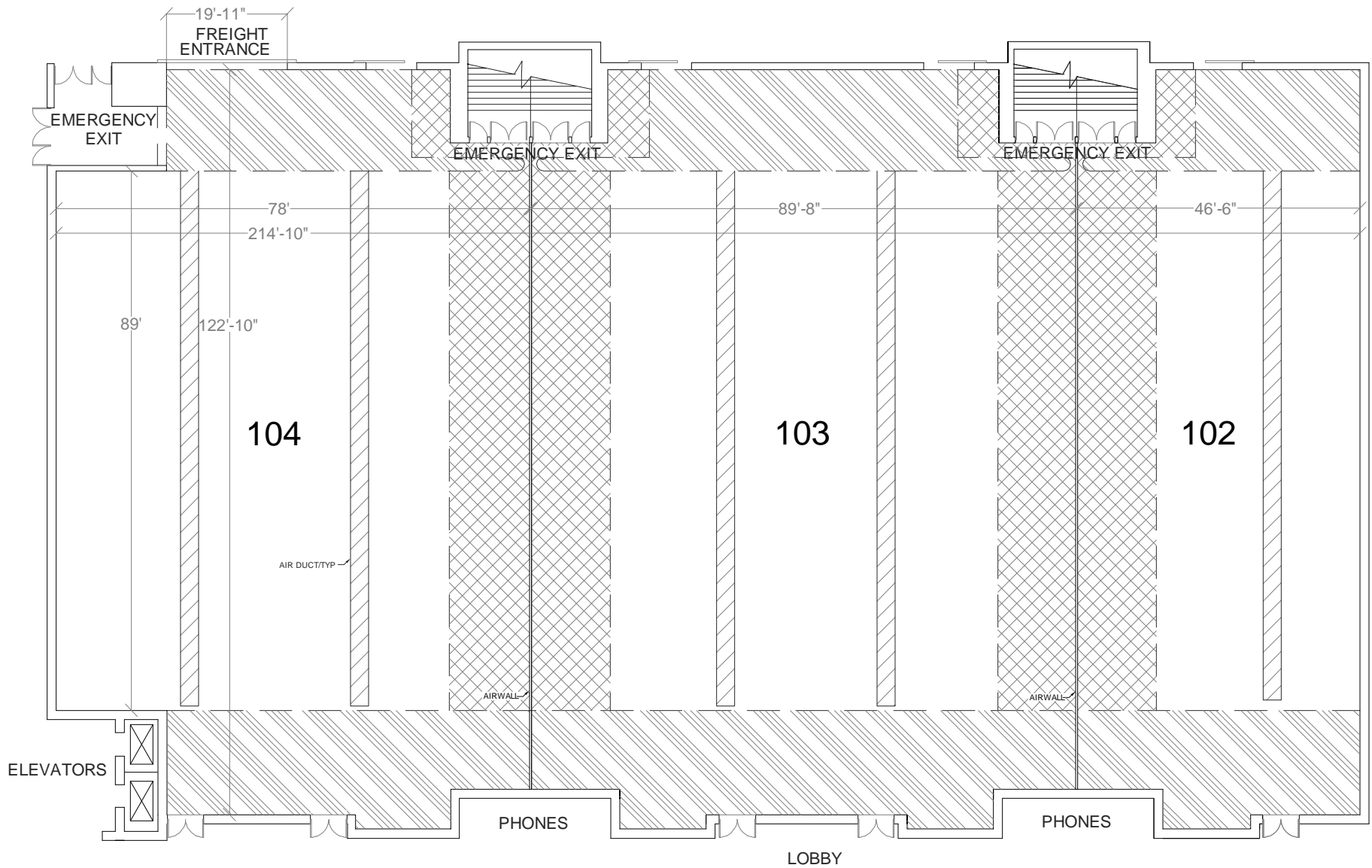
GATEWAY BALLROOM

FLOOR PLANS & UTILITY PLANS

Every effort has been made to ensure the accuracy of all information contained on this floorplan, however no warranties, either expressed or implied, are made with respect to the plan. If the location of building columns, utilities or other architectural components of the facility is a consideration in the use of the space, it is the sole responsibility of the user to physically inspect the facility to verify all dimensions and locations.




TABLE OF CONTENTS

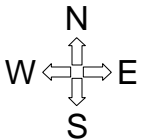
GATEWAY BALLROOM FLOOR PLAN.....	1
GATEWAY BALLROOM UTILITY PLAN.....	2



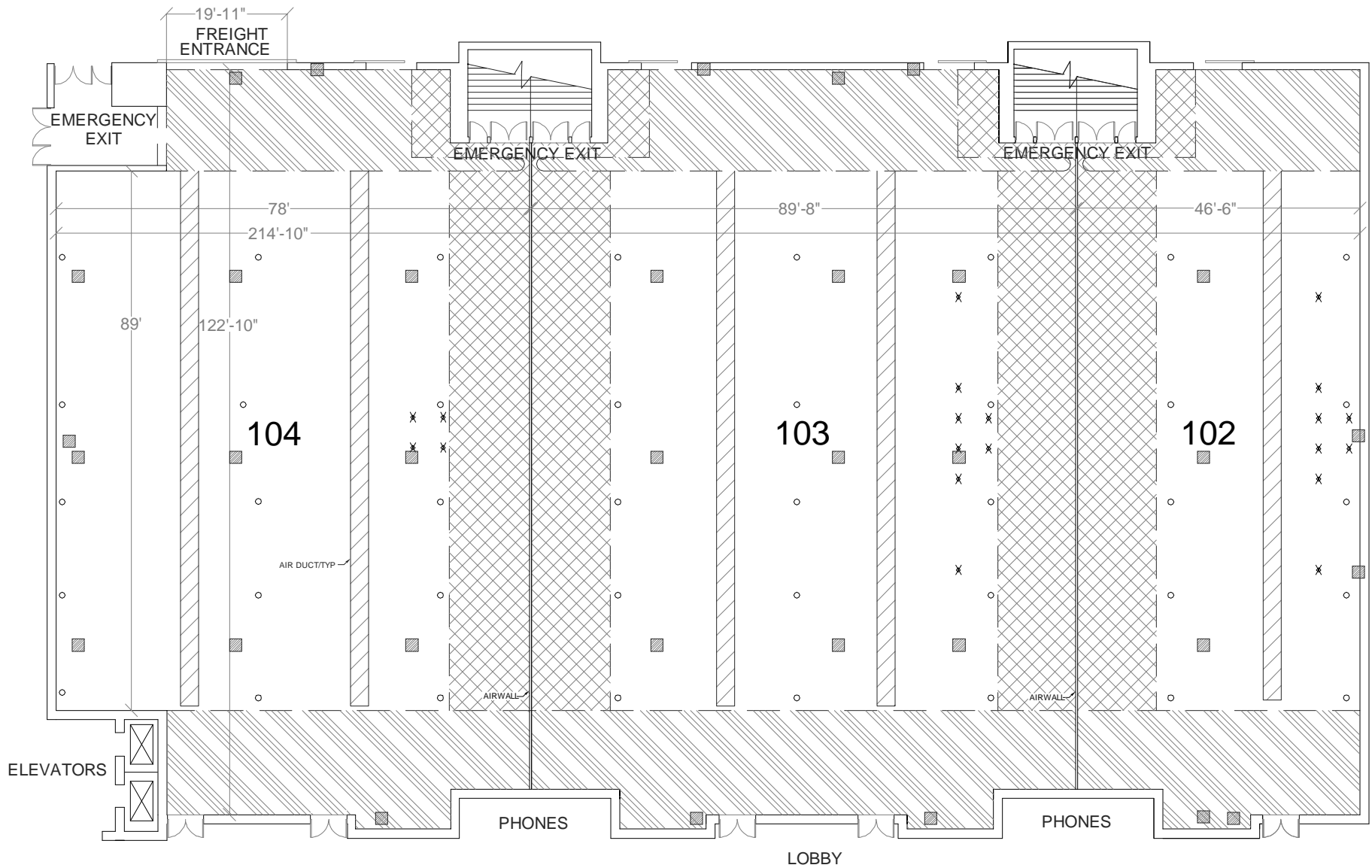
CEILING HEIGHT NOTES:

CEILING HEIGHT = 23'-7 1/2".

-  DENOTES CEILING HEIGHT OF 13'-11".
-  DENOTES CEILING HEIGHT OF 19'-4".
-  DENOTES CEILING HEIGHT OF 20'.






GATEWAY BALLROOM FLOOR PLAN



CEILING HEIGHT NOTES:

CEILING HEIGHT = 23'-7 1/2".

-  DENOTES CEILING HEIGHT OF 13'-11".
-  DENOTES CEILING HEIGHT OF 19'-4".
-  DENOTES CEILING HEIGHT OF 20'.

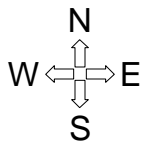
UTILITY NOTES:

 DENOTES UTILITY FLOOR PORT.

RIGGING NOTES:

 DENOTES HANG POINTS RATED AT 500 LBS.

 DENOTES HANG POINTS RATED AT 50 LBS.



GATEWAY BALLROOM UTILITY PLAN