



Exhibitor Green Guide

Five great reasons for exhibitors to participate in Moscone Center's program



Reduce events' overall wastestream.



Minimize show's trash removal costs.



Use resources more efficiently.



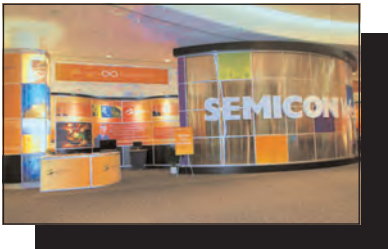
Benefit San Francisco's community of nonprofits.

Comply with local laws mandating landfill diversion.

Pre-event planning:

Ask your contractor, what is new and "green"?

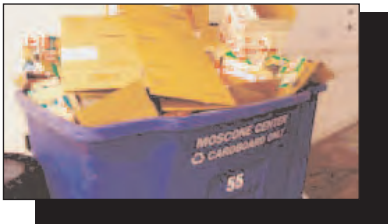
Today, carpet, sign board and exhibit booths can all be made sustainable with recycled content materials. Ask your contractor, what is available that is sustainable? Avoid ordering PVC-content FoamCore signs, non-recycled content booth carpet or non-recyclable Sintra booth panels. Sustainable alternatives of equal quality are available! *Photo left, SEMICON West 2009 green exhibit booth.*



During event:

Recycle your cardboard boxes.

Throughout the show, Moscone staff will collect empty cardboard boxes in the large blue carts marked "Cardboard Only" located around the perimeter of the exhibit hall floor. Please be sure your boxes are empty. Do not put packing materials or literature into the cardboard bins.



Put bottles & cans into marked recycling bins.

Throughout the show, deposit your glass juice bottles, aluminum soda cans, and plastic water bottles into the marked recycling bins. No Starbucks cups are allowed! Bins marked "Bottles & Cans" are located in lobby areas, on the exhibit hall floor, and near catered functions. [Intro to Recycling video](#)



After event closes:

Label unwanted show literature.

After the show, why pay to transport boxes of unwanted literature and handouts? Instead, you can recycle them here! At show close, place a green recycling label on all unwanted boxes of paper - even pallet-loads full. We recycle all types of paper, including magazines, catalogues, brochures and pamphlets.

Label leftover merchandise for donation.

At show close, any leftover merchandise, giveaways, reusable items, even shopping bags, can be labeled for donation to local nonprofits. Affix a blue donation label and set aside the items during move out. We will make sure your donation benefits the local community. [Watch the Donation video](#)

Where can exhibitors get labels?

Pick up labels at the General Service Contractor's Service Desk. Moscone Center's Recycling staff will also distribute donation and recycling labels directly to you just prior to the exhibit hall closing.



First U.S. city to ban plastic bags and styrofoam

Effective June 1, 2007, food vendors and restaurants in San Francisco must use compostable or recyclable to-go containers. Polystyrene foam (Styrofoam™) disposable food service ware can no longer be used for food prepared in San Francisco.



No styrofoam serveware

In 2007 food service businesses were required to stop using plastic and styrofoam and switch to compostable food serveware. Styrofoam is made from petroleum products. Moscone Center encourages exhibitors to serve food samples on recycled content paper plates, and in recycled content paper cups and compostable serveware, like the lunchbox shown above. These are all available from Moscone Center's SAVOR Catering. A list of outside providers of compostable products is posted at sfenvironment.org/our_programs/ ▶



This lunch box is made from compostable corn resins.

 [Watch the Compostable Serveware video](#) ▶

Buy green!



Purchase paper or other compostable serveware, **not styrofoam** serveware!



No plastic bags

San Francisco's 2007 Plastic Bag Reduction Act, now codified as Chapter 17 of the San Francisco Environmental Code, bans plastic bags

for use by certain stores and businesses. The Plastic Bag Reduction Ordinance is one of a number of initiatives intended to advance the City's goal of diverting 75 percent of its solid waste from landfills by 2010. The ordinance requires using recyclable paper bags, and/or compostable plastic bags. Paper bags must have at least 40% post-consumer recycled content and compostable plastic bags must be certified as meeting ASTM D6400 compostability standards by the Biodegradable Product Institute. The ordinance also allows stores to use "reusable bags", which are defined as bags with handles that are specifically designed and manufactured for multiple reuse and are either (1) made of cloth or other machine washable fabric; and/or (2) made of durable plastic that is at least 2.25 mils thick. **Moscone Center encourages exhibitors not to use or distribute plastic bags.**



This tote bag is made from recycled plastic bottles.

Buy green!






Purchase reusable bags for giving out samples - **not plastic** bags, and not free paper bags either!




Q: "Where can exhibitors buy green supplies?"

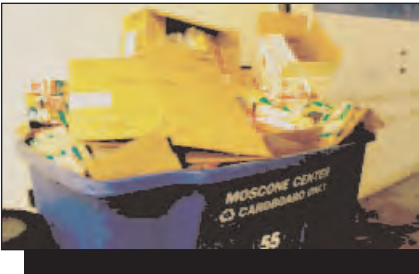
A: City-approved suppliers are listed at the San Francisco Department of the Environment's website: sfenvironment.org/our_programs/topics.html?ti=22 ▶



Moscone Center is the U.S. EPA's Pacific Region 2009 Sustainable Facility

-  Recycling Program
-  Air Quality Program
-  Green Housekeeping

-  Solar Energy Generation
-  Energy Efficient Lighting
-  Zero Waste Catering



Recycling Program

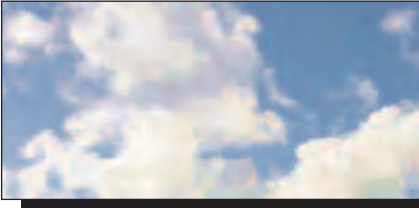
Annually diverting by weight over 60% of Moscone Center's total wastestream, with nearly 10% of that being donations to nonprofits, the award-winning recycling program celebrates its twelfth year. The program handles cardboard, kitchen organics, wood, mixed paper, bottles & cans, leftover food and exhibitor product, vinyl banners, carpet padding, foamcore, stage props, metal and more. [Watch the Recycled Materials video](#) ▶



Solar Energy Generation

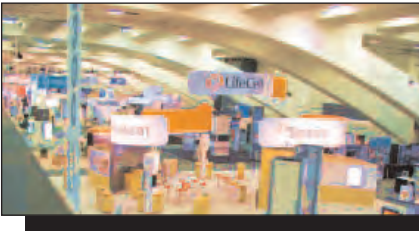
Installed in 2004, Moscone South's system uses Shell and Sanyo brand photovoltaic cells covering 60,000 sq. ft. The system annually generates 826,000 kilowatt-hours per year, or enough energy to power over 600 homes for a year and displaces 317 tons of carbon dioxide annually. The 675 kilowatts peak system is owned by the City and County of San Francisco through the San Francisco Public Utilities Commission.

[Watch the Solar System video](#) ▶



Air Quality Program

Throughout the event move-in and move-out, Moscone Center's AQ Manager tests exhaust fumes on the exhibit hall floors. Trucks may not idle, and all carts and forklifts must be retrofitted to produce low emissions. Any forklifts violating our standards will be removed from the floor. Smoking is prohibited in the building.



Energy Efficient Lighting

In 2004, a major lighting retrofit to the North and South exhibit hall ceiling lights was completed. Cool burning energy efficient compact fluorescent lamps, T8 fluorescent and metal halide fixtures helped cut use the first year by 20%. To maintain optimum energy savings, full exhibit hall lighting can be provided up to 30 minutes prior to the scheduled opening of a show's exhibit program and up to 30 minutes after closing each day. [Watch the Lighting Retrofit video](#) ▶



Green Housekeeping

Since late 2008, the facility has used the most sustainable housecleaning products available. Cleaning agents used in all areas including restrooms, carpets, lobbies and exhibit hall floors, are Green-Seal certified and U.S. EPA approved, benefitting you, the staff and the environment. [Watch the Green Cleaning video](#) ▶



Zero Waste Catering

SAVOR...*San Francisco* serves all food in disposable serveware that is not only biodegradable, but also compostable. The compostable serveware is made of corn, sugarcane or recycled paper-based-product--even coffee cup lids are compostable. Compost is collected at large catered functions in clearly marked bins. Bottles and cans are collected separately for recycling. [Compostable Serveware video](#) ▶